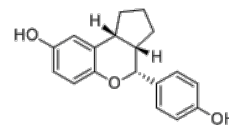


Product Name : LY500307
Cat. No. : PC-35370
CAS No. : 533884-09-2
Molecular Formula : C₁₈H₁₈O₃
Molecular Weight : 282.339
Target : Estrogen Receptor/ERR
Solubility : 10 mM in DMSO



Biological Activity

LY500307 (LY-500307, Erteberel, SERBA-1) is a potent, selective **Estrogen Receptor β (ER β)** agonist with K_i/EC_{50} of 0.19/0.66 nM, 12-fold higher affinity than ER α and exhibits 32-fold more functional potency.

LY500307 reduces proliferation and induces apoptosis in GBM cells, enhances ER β signaling and expression.

LY500307 modulates the expression of genes involved in cell cycle, cell death, survival, and DNA damage response.

LY500307 also sensitizes GBM cells to chemotherapeutic agents, reduces GBM progression in an orthotopic model.

References

Sareddy GR, et al. *Sci Rep.* 2016 Apr 29;6:24185.

Zhao L, et al. *Proc Natl Acad Sci U S A.* 2018 Apr 17;115(16):E3673-E3681.

Reese JM, et al. *Oncotarget.* 2017 Oct 11;8(57):96506-96521.

Caution: Product has not been fully validated for medical applications. Lab Use Only!

E-mail: tech@probechem.com